



SAR-App + SearchWing

HOW NERDS HELP SEA-WATCH
TO SAVE LIVES ON THE MED



Sea-Watch.org



FIGHTING FORTRESS EUROPE SINCE 2015

[#SafePassage](#)



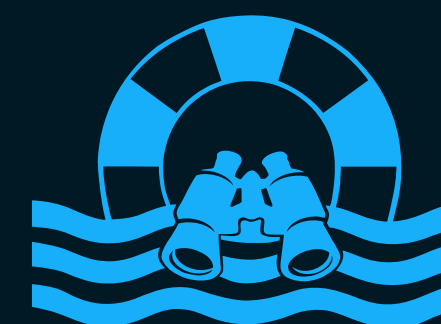
EUROPES CASTLE DITCH
the initial situation

16



Sea-Watch.org

1 / 16



Sea-Watch.org



Esri World Geocoder

MISSING MIGRANTS PROJECT / IOM (UN)

missingmigrants.iom.int

Latest data

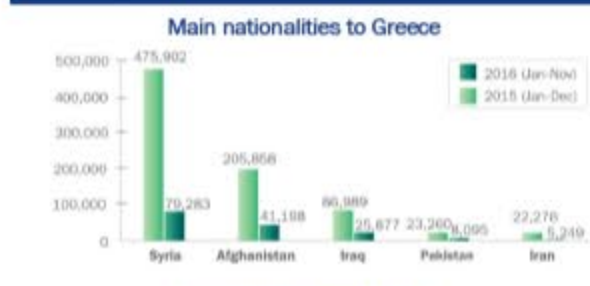
4,913
migrant deaths
in the Mediterranean
of **7,274** deaths
recorded worldwide

Published 11:00 CET 22 December 2016

- Latest Downloads:**
 Latest Mediterranean Update [here](#)
 Dangerous Journeys data brief [here](#)
 Missing Migrants Project's annual report [here](#)
 Back issues of Mediterranean Update [here](#)
 Full incident data-set with estimated coordinates [here](#)



Mediterranean Update Migration Flows Europe: Arrivals and Fatalities



1 / 44





SEARCH AND RESCUE D.I.Y.

How Sea-Watch got started

SEA-WATCH E.V.
HARALD HÖPPNER



A simple question:
What is the difference?









Sea-Watch

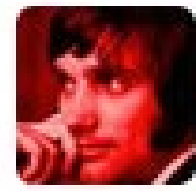
Sea-Watch



DCXY

#SCHWEIGEJAUCH





Conrad Elser

@swala4711



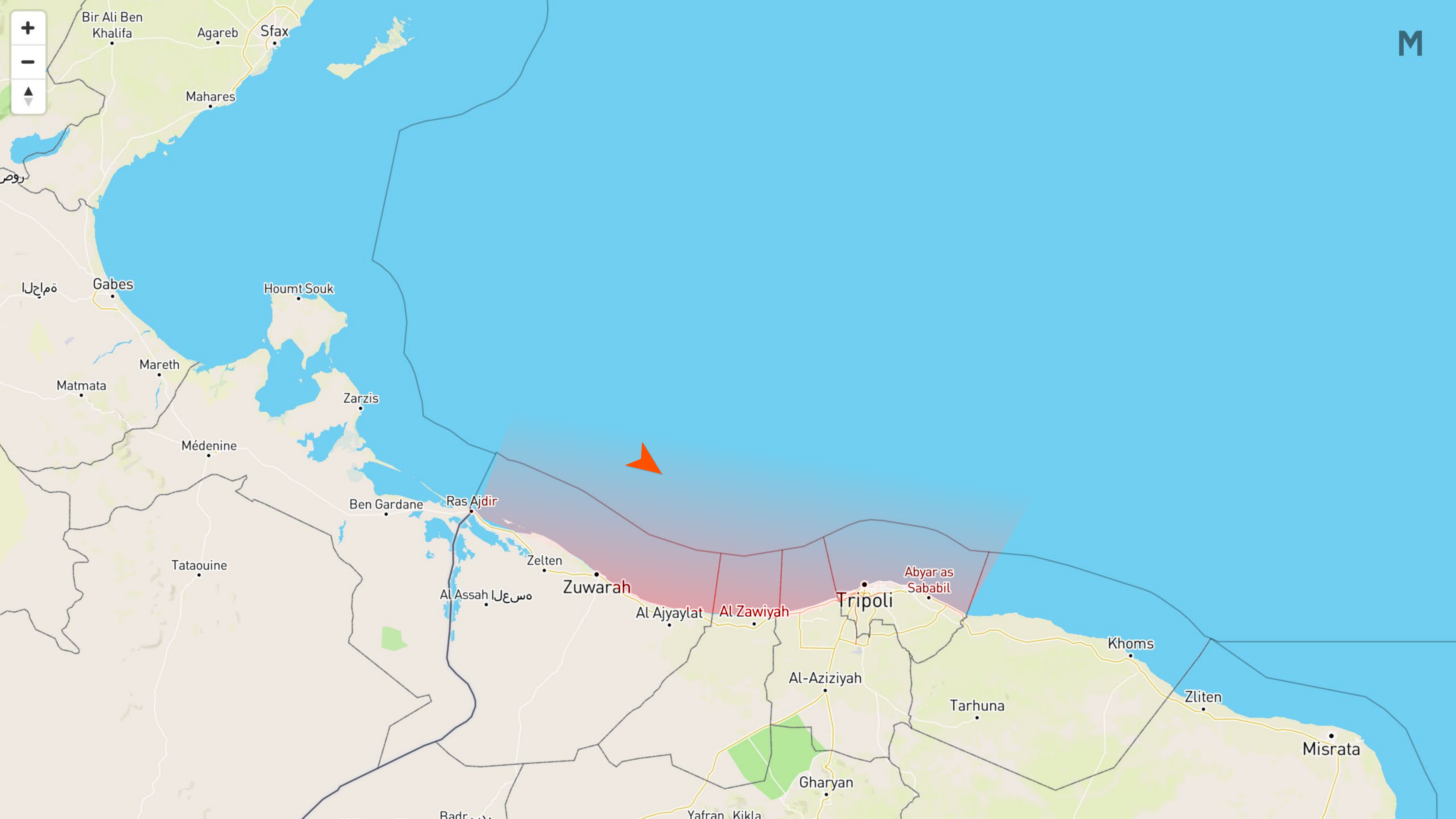
+ Folgen

Für dieses Gesicht während der
#Schweigejauch hat es sich dann doch
gelohnt. #Jauch



Sea-Watch.org





M





#SPREEBOOT





SEA-WATCH 2

Sea-Watch

HARBOR MASTER
HAFENKAPITAN

14
12
10
8



D-MJAN









20,000



Sea-Watch 2 Dispatch August 18th 2016



IUVENTA



SOS MEDITERRANEE GER

@SOSMedGermany



Folge ich

#BREAKING 12 hours #rescue operation of 3 wooden boats off #Libya - several hundred are save on board #Aquarius. Rescue started 2AM today

Original (Englisch) übersetzen



RETWEETS
12

GEFÄLLT
9



06:43 - 28. Dez. 2016



5,000+



D-MJAN





HUMANITARIAN PILOTS INITIATIVE
www.hpi-initiative.org

D-MJAN

Sea-Watch.org





Sea-Watcho





WE



Sea-Watch.org

NEEDED

NERDS!



SearchWing

FIND TO RESCUE

Vehicles

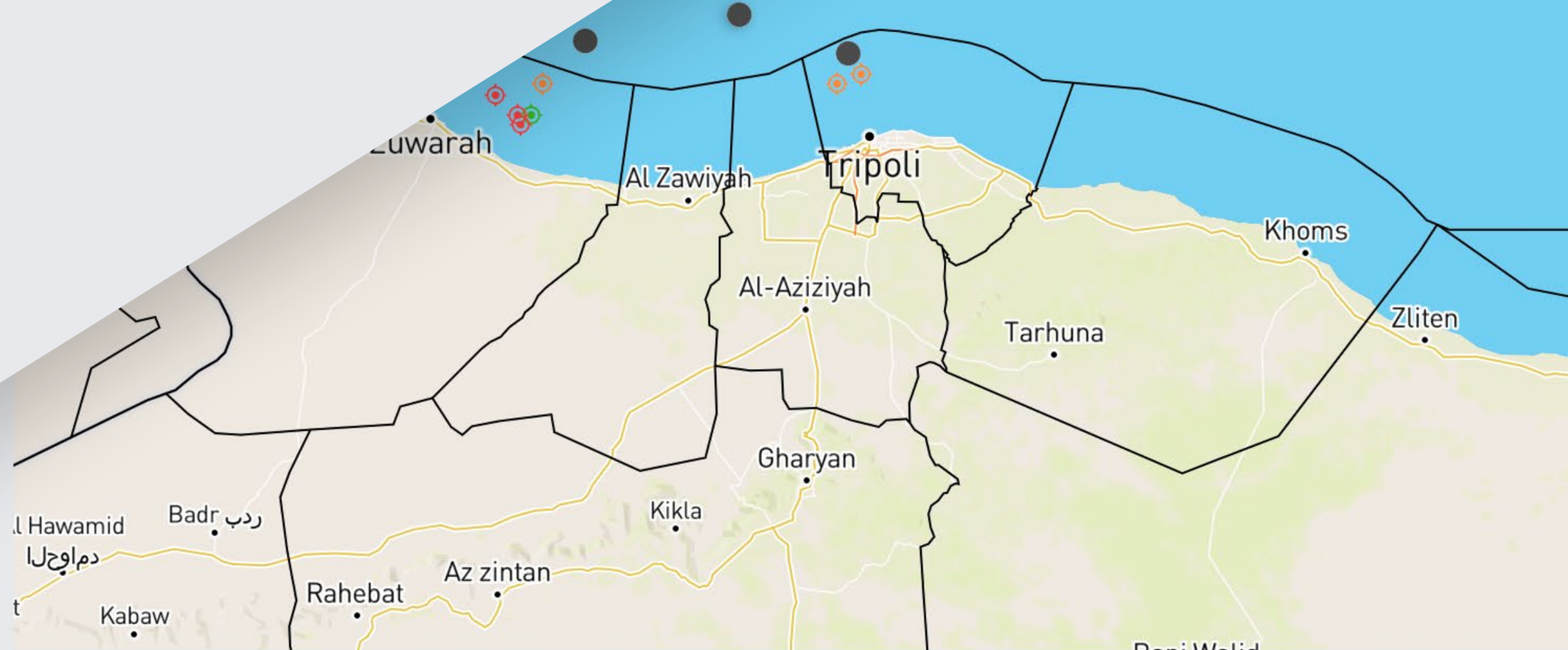
- All
- Sea-Watch 2
- Iuventa (Jugend Rettet)
- Aquarius (SOS Med)
- Sea-Eye
- Bourbon Argos (MSF)
- Phoenix (MOAS)
- Phoenix (MSF)

Status

- Need Help
- Critical
- Confirmed
- Possible Target
- Attended
- Closed

... 2 new cases since last update

#1194 · 10. October 2016 - 06:32 · N 32° 57' 45.311" · O 12° 33' 26.542"	Added by: Sea-Watch 2	
Need Help	Rubberboat	People in water
#1193 · 10. October 2016 - 05:12 · N 32° 57' 45.311" · O 12° 33' 26.542"	Added by: Iuventa (Jugend Rettet)	
Attended	Woddenboat	Bad
#1192 · 10. October 2016 - 05:01 · N 32° 57' 45.311" · O 12° 33' 26.542"	Added by: Sea-Watch 2	
Closed	Rubberboat	



All Chat Log

Iuventa (Jugend-Rettet e.V.) · 20 minutes ago

At our position, there is a woddenboat we attended to. CP 148 is on the way. If somebody has ressources he could help.

Sea-Eye · 13 minutes ago

@Iuventa: We are on our way.

10. October 2016 - 06:32

Sea-Watch 2 added Case #1194. Status: Need Help, Type: Rubberboat, Condition: People in water

Aquarius (SOS MED) · 5 minutes ago

@Sea-Watch 2: Channel 71, for contact

10. October 2016 - 06:38

Aquarius (SOS MED) attended Case #1194.

Sea-Eye · 2 minutes ago

@Iuventa: If is not urgent, we would first go to @Sea-Watch 2?

Iuventa (Jugend-Rettet e.V.) · 2 minutes ago

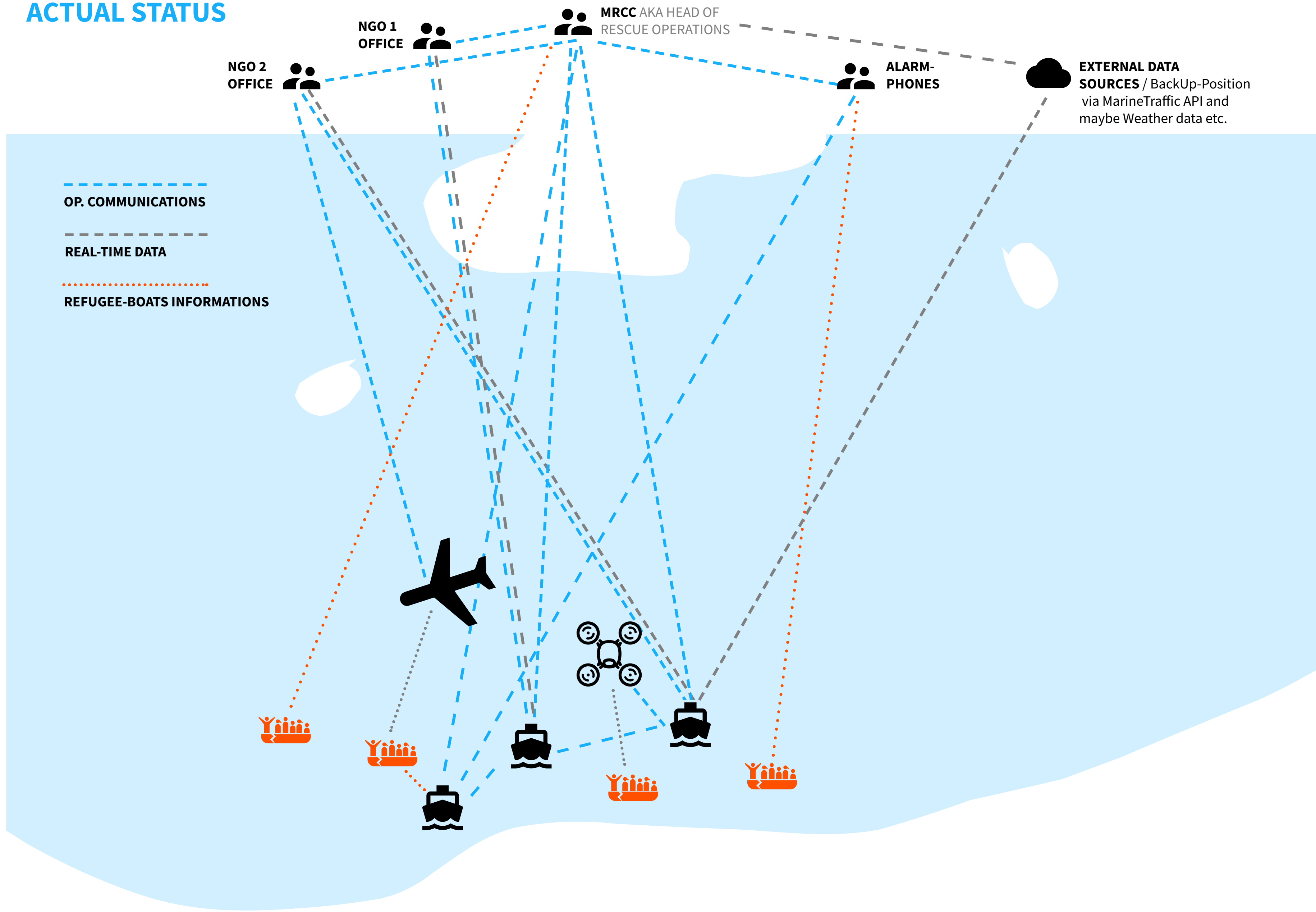
@Sea-Eye: Ok

10. October 2016 - 06:42

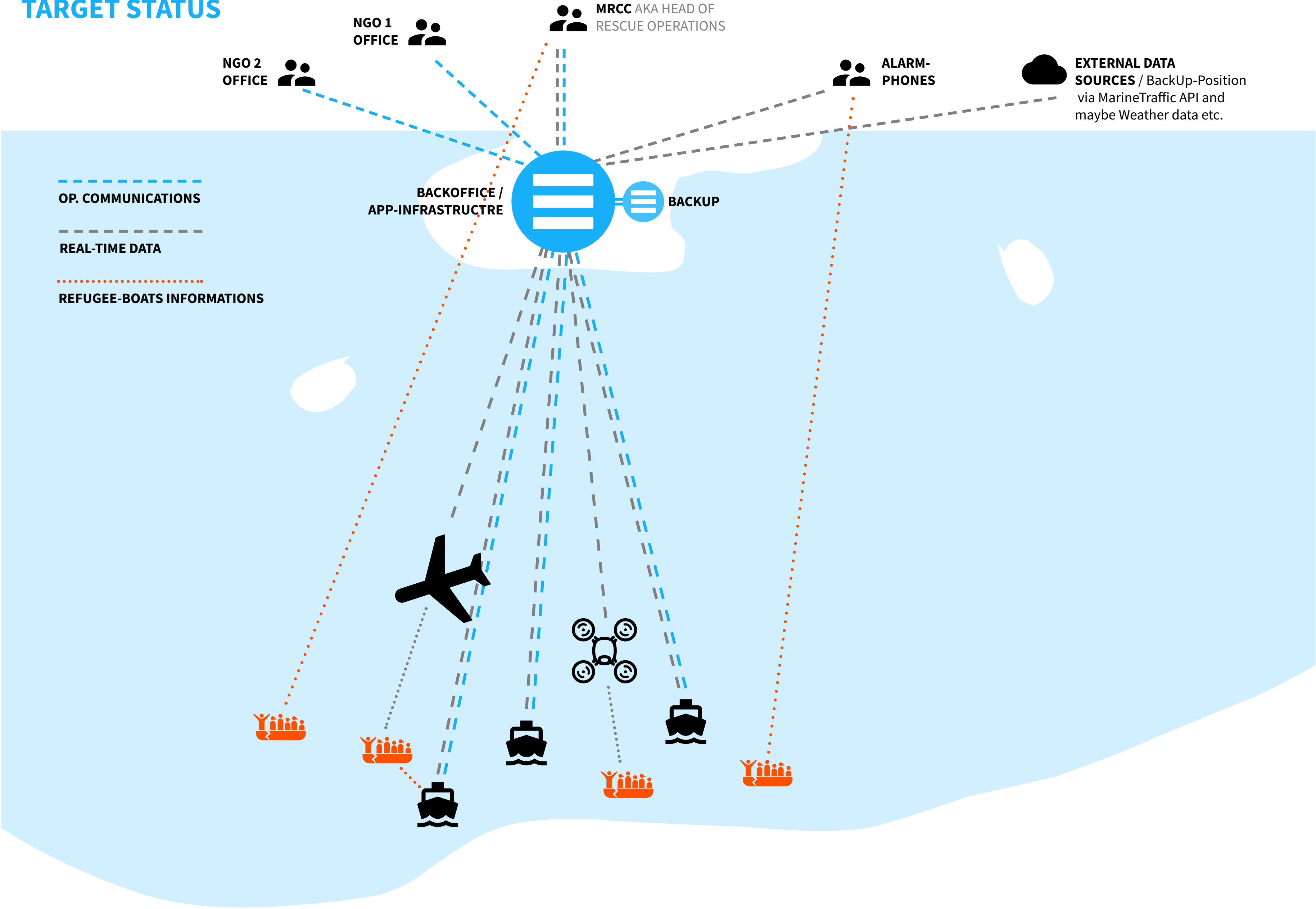
Sea-Eye attended Case #1194.

Ihre Nachricht. Absenden mit Klick auf Enter.

ACTUAL STATUS



TARGET STATUS



SAR ICT-App · Idea

COORDINATE CASES & MISSIONS

- It consists on a **geographic information system** linked to a database in which **cases and rescue vessels** can be **located** with all necessary informations like boat-type or how many people on board.
- It gives all participants an **overview** of what is **happening now** and what has **happened in the past**.
- Conservation of **evidence**
position-data, timestamps, involved parties, etc.



DISPLAY MODE MAP-VIEW

SEA-WATCH SAR-Command

MODE **Map** Cases **Create New Case** Show Cases

SEA-WATCH E.V. **Sea-Watch 2**

Vehicles

- All
- Sea-Watch 2
- Iuventa (Jugend Rettet)
- Aquarius (SOS Med)
- Sea-Eye
- Bourbon Argos (MSF)
- Phoenix (MOAS)
- Phoenix (MSF)

Status

- Need Help
- Critical
- Confirmed
- Possible Target
- Attended
- Closed

Zarzis, Ben Gardane, Ras Ajdir, Zelten, Al Assah, Zuwarah, Al Zawiyah, Tripoli, Al-Aziziyah, Khoms, Tarhuna, Zliten, Gharyan, Kikla, Az zintan, Rahebat, Badr, l. Hawamid, Kabaw, Damiyah, Rahebat, Az zintan, Kikla, Gharyan, Tarhuna, Zliten, Khoms, Tripoli, Al-Aziziyah, Al Zawiyah, Zuwarah, Zelten, Ras Ajdir, Ben Gardane, Zarzis

All Chat Log

Iuventa (Jugend-Rettet e.V.) · 20 minutes ago

At our position, there is a woddenboat we attended to. CP 148 is on the way. If somebody has ressources he could help.

Sea-Eye · 13 minutes ago

@Iuventa: We are on our way.

10. October 2016 - 06:32

Sea-Watch 2 added Case #1194. Status: Need Help, Type: Rubberboat, Condition: People in water

Aquarius (SOS MED) · 5 minutes ago

@Sea-Watch 2: Channel 71, for contact

10. October 2016 - 06:38

Aquarius (SOS MED) attended Case #1194.

Sea-Eye · 2 minutes ago

@Iuventa: If is not urgent, we would first go to @Sea-Watch 2?

Iuventa (Jugend-Rettet e.V.) · 2 minutes ago

@Sea-Eye: Ok

10. October 2016 - 06:42

Sea-Eye attended Case #1194.

Ihre Nachricht. Absenden mit Klick auf Enter.

FUNCTION OVERVIEW

NAVIGATION

SYSTEM STATUS

BLUE = CONNECTED & ONLINE
RED = NOT CONNECTED

USER

SEA-WATCH SAR-Command | MODE Map Cases CREATE New Case | SEA-WATCH E.V. Sea-Watch 2

CREATE NEW CASE

UPDATE CASE LIST

... 2 new cases since last update

CHAT & LOG IN ONE SIMPLE OVERVIEW

VEHICLE-FILTER & STATUS

GREEN ONLINE
ORANGE SHORT AWAY
GREY OFFLINE

OFFLINE = more 20 min. no connection

CASES-FILTER & STATUS

Vehicles

- All
- Sea-Watch 2
- Iuventa (Jugend Rettet)
- Aquarius (SOS Med)
- Sea-Eye
- Bourbon Argos (MSF)
- Phoenix (MOAS)
- Phoenix (MSF)

Status

- Need Help
- Critical
- Confirmed
- Possible Target
- Attended
- Closed

CASEBOX "CLICKED"

CASEBOX

TEXTFIELD

EDIT CASE

#1194 · 10. October 2016 - 06:32 · N 32° 57' 45.311" · O 12° 33' 26.542" Added by: Sea-Watch 2

Need Help	Rubberboat	People in water	
-----------	------------	-----------------	--

#1193 · 10. October 2016 - 05:12 · N 32° 57' 45.311" · O 12° 33' 26.542" Added by: Iuventa (Jugend Rettet)

Attended	Woddenboat	Bad	
----------	------------	-----	--

Status: Confirmed Boat Type: Wooden Condition: Bad Working Engine

Position: N 32 ° 57 ' 45.311 " O 12 ° 33 ' 26.542 "

How many people? 150 ... women? 40 ... children? 20 ... disabled? 5

Other Boat/s involved Additional Informations

#1192 · 10. October 2016 - 05:01 · N 32° 57' 45.311" · O 12° 33' 26.542" Added by: Aquarius (SOS MED)

Closed	Rubberboat	Good	
--------	------------	------	--

All Chat Log

Iuventa (Jugend-Rettet e.V.) · 20 minutes ago
At our position, there is a woddenboat we attended to. CP 148 is on the way. If somebody has ressources he could help.

Sea-Eye · 13 minutes ago
@Iuventa: We are on our way.

10. October 2016 - 06:32
Sea-Watch 2 added Case #1194. Status: Need Help, Type: Rubberboat, Condition: People in water

Aquarius (SOS MED) · 5 minutes ago
@Sea-Watch 2: Channel 71, for contact

10. October 2016 - 06:38
Aquarius (SOS MED) attended Case #1194.

Sea-Eye · 2 minutes ago
@Iuventa: If is not urgent, we would first go to @Sea-Watch 2?

Iuventa (Jugend-Rettet e.V.) · 2 minutes ago
@Sea-Eye: Ok

10. October 2016 - 06:42
Sea-Eye attended Case #1194.

Ihre Nachricht. Absenden mit Klick auf Enter.

We need your help!

- Security Concept
- Decentralization
- Geo-Hacker / Informatics
- Ideas? come to the searchwing assembly





SearchWing

FIND TO RESCUE

HOW IT BEGAN



SearchWing
FIND TO RESCUE

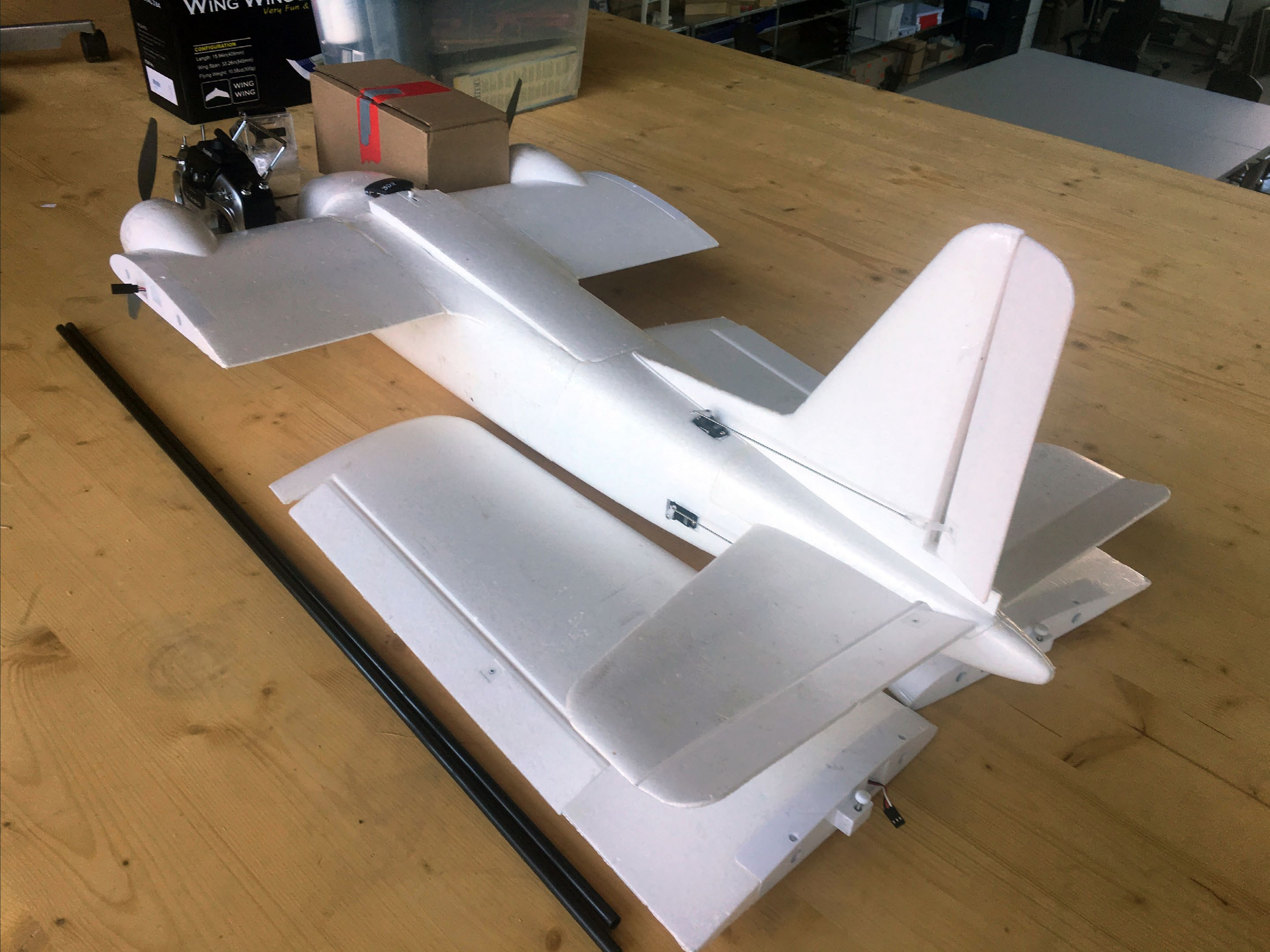
CC BY-SA 3.0 · https://commons.wikimedia.org/wiki/File:Schiebel_Camcopter_S-100_at_ILA_2010.jpg
MatthiasKabe / Schiebel Camcopter S-100

SCENARIOS



SearchWing

FIND TO RESCUE





MyTwinDream
双子星

FRAGILE FRAGILE FRAGILE FRAGILE FRAGILE

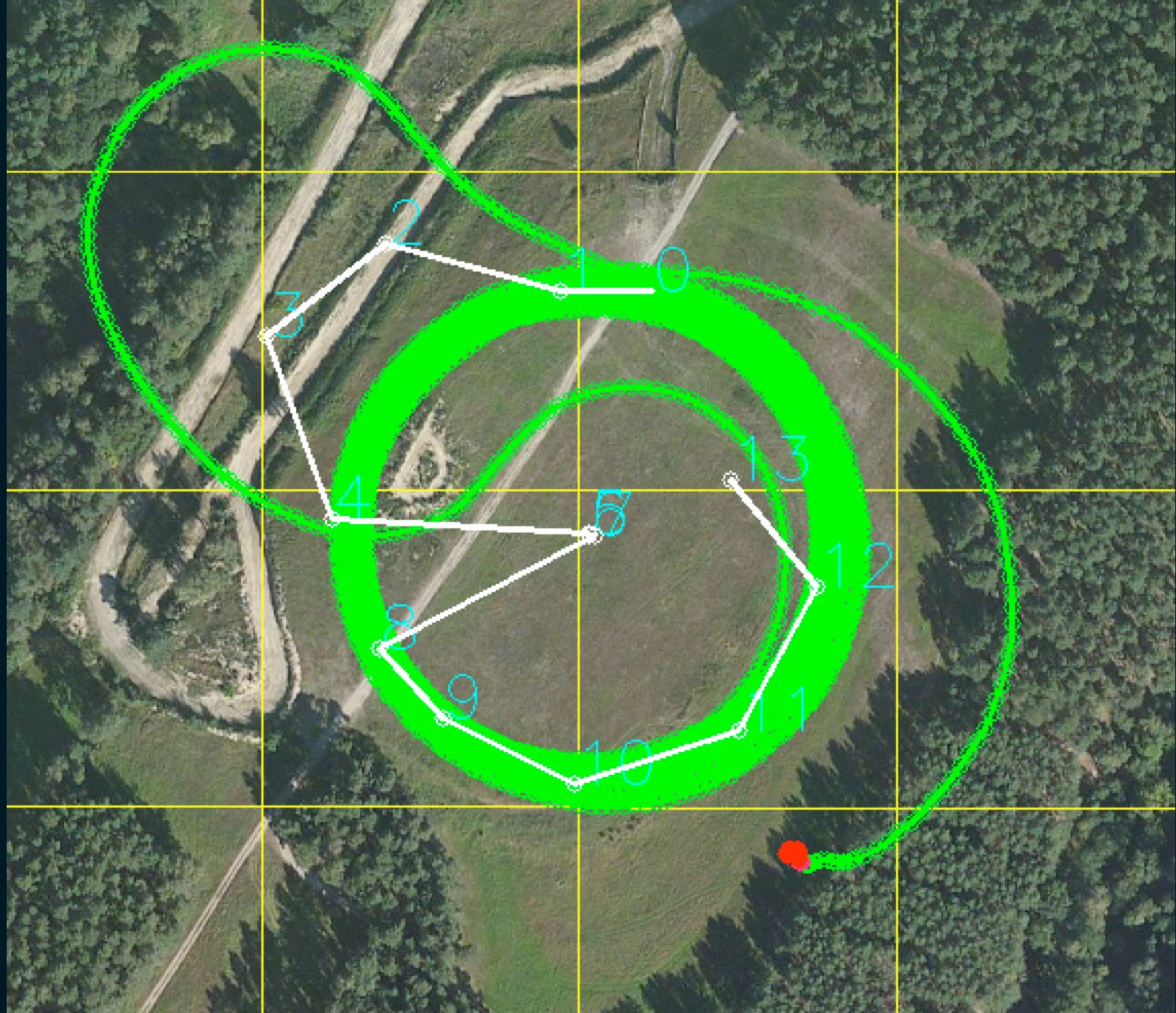
LEARNING CURVE



SearchWing

FIND TO RESCUE









TECHNICS



SearchWing

FIND TO RESCUE

CHALLENGES



SearchWing

FIND TO RESCUE

UPCOMING MILESTONES



SearchWing

FIND TO RESCUE

VISION



SearchWing

FIND TO RESCUE

CONTRIBUTE

www.searchwing.org



SearchWing

FIND TO RESCUE

LICENCE

non-commercial - non-military



SearchWing

FIND TO RESCUE

QUESTIONS



SearchWing

FIND TO RESCUE